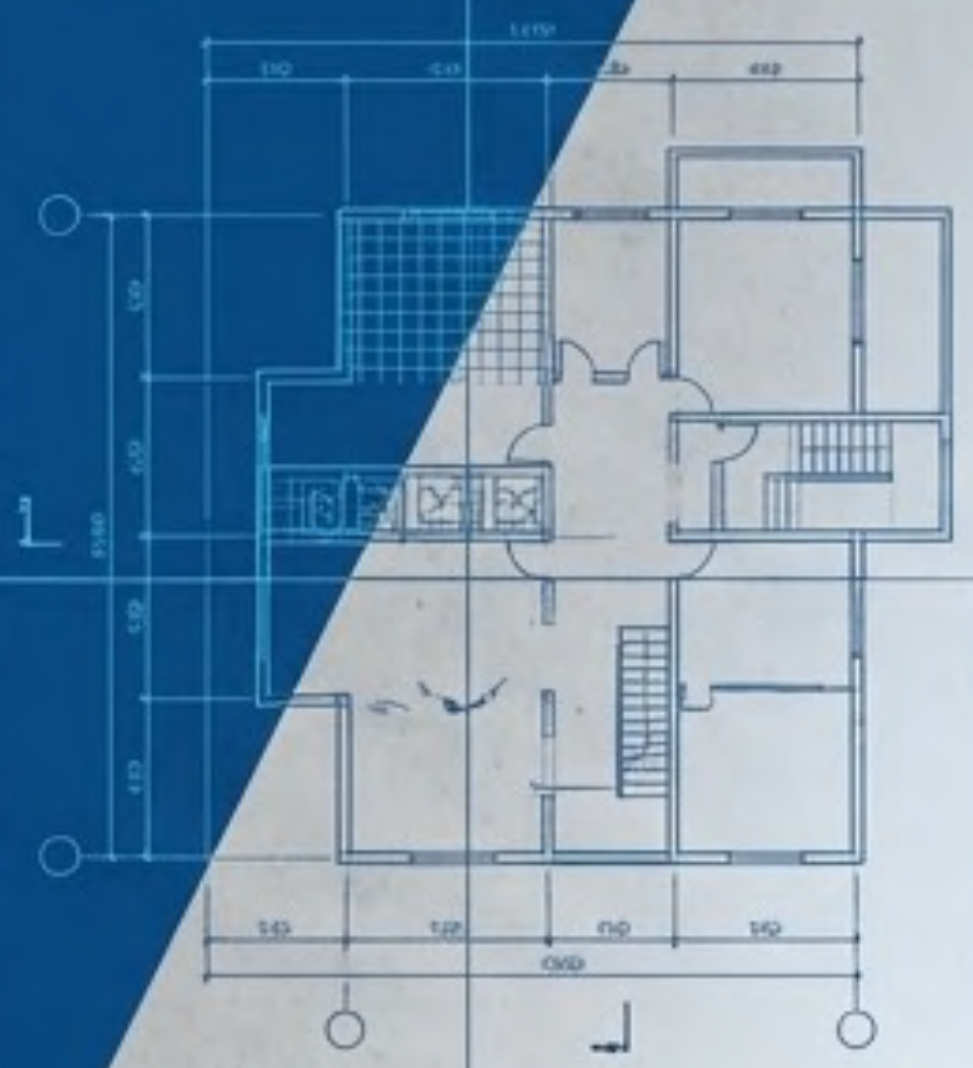


# Engineering Sabah's Future

Civil, Structural & Project  
Project Management  
Excellence Since 1970



# Half a Century of Built Reality

**55+**

Years of trusted local expertise in Sabah (Established 1970).



**2,092**

Verified, completed projects across Malaysia.



**1**

Unified goal of safety, efficiency, and long-term structural performance.



# 55+

Years of Execution  
(Est. 1970)

# 2,092

Total Completed &  
Active Projects

## The Foundational Engineers of Sabah

Since 1970, Wang Haron & Goh (WHG) has operated as the battle-tested engineering partner of choice for developers, government agencies, and contractors in Malaysia.

We do not just design structures; we engineer the essential frameworks of Sabah's economic and urban expansion.

ITEM	QTY
1	9
2	2
3	59 3/4

# The Capability Stack

## The Overarching Canopy:

Project Management & EIA.  
(End-to-end supervision and environmental compliance enveloping the entire structure)

## Anatomy of a Project

### Superstructure (The Skyline): Structural Design & Analysis.

(High-rises, industrial factories, long-span systems)

### Surface Systems (The Flow): Civil Works.

(Water supply, sewerage schemes, storm drainage)

### Ground Level (The Arteries): Road, Highway & Marine Engineering.

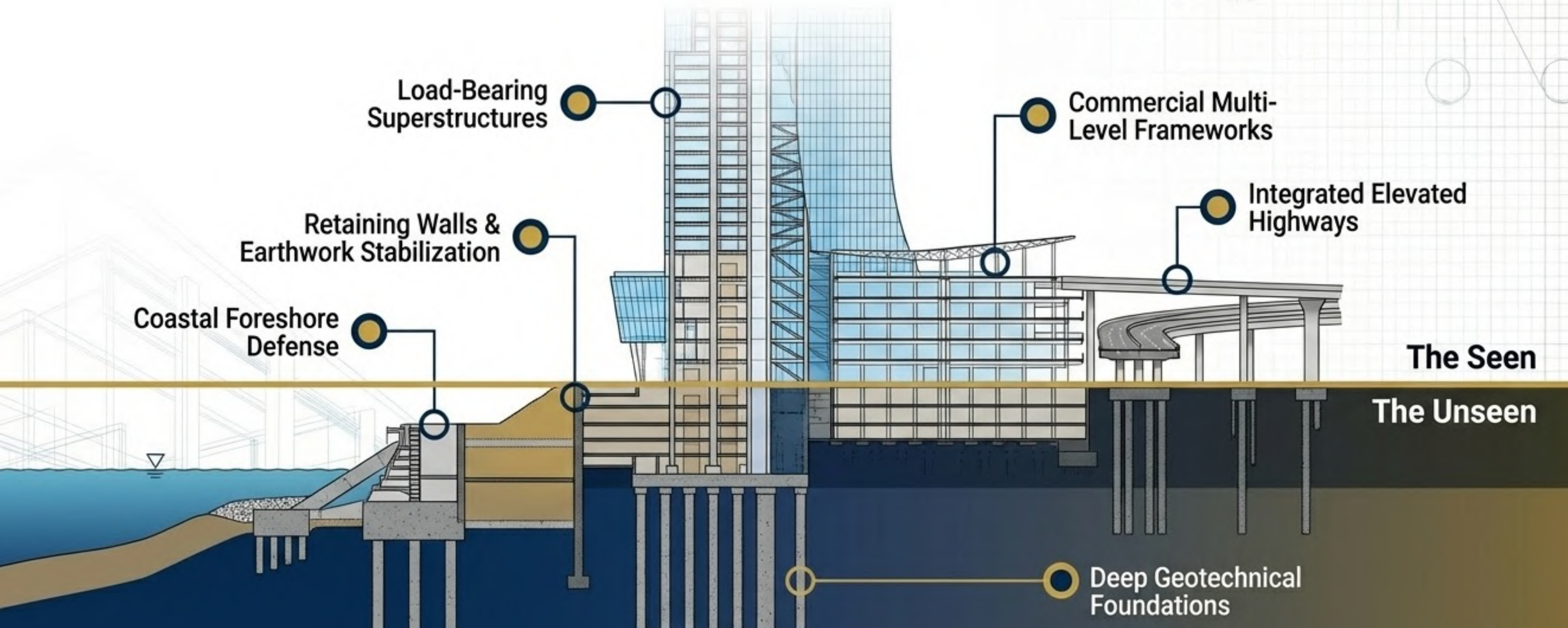
(Trunk roads, intersections, slipways, dredging, foreshore defense)

### Subterranean (The Base): Foundation & Geotechnical Engineering.

(Earthworks, soil surveys, stabilization)

# Engineering the Unseen to Enable the Spectacular

Sabah's unique topography requires absolute mastery of the ground before the sky can be reached. WHG's holistic control over **geotechnical foundations** directly powers our ability to execute massive, modern commercial complexes safely.



# A Half-Century of Engineering Evolution.

## 1970s: Foundational Infrastructure

- Sabah Padi Board Settlements,
- Rural Water Supplies,
- Early Topographic Surveys.

## 1990s: Institutional Mega-Projects

- University Malaysia Sabah (UMS) Campus (1997),
- High-Rise Bank Headquarters.

## 2000s: The Retail Boom

- 1 Borneo Hypermall,
- Suria Sabah Mall,
- Major Urban Condominiums.

## 2020s: Next-Gen & Industrial

- 10MW/50MW Large Scale Solar PV Plants,
- High-Voltage PMU Sub-stations,
- Advanced Marine Bases.

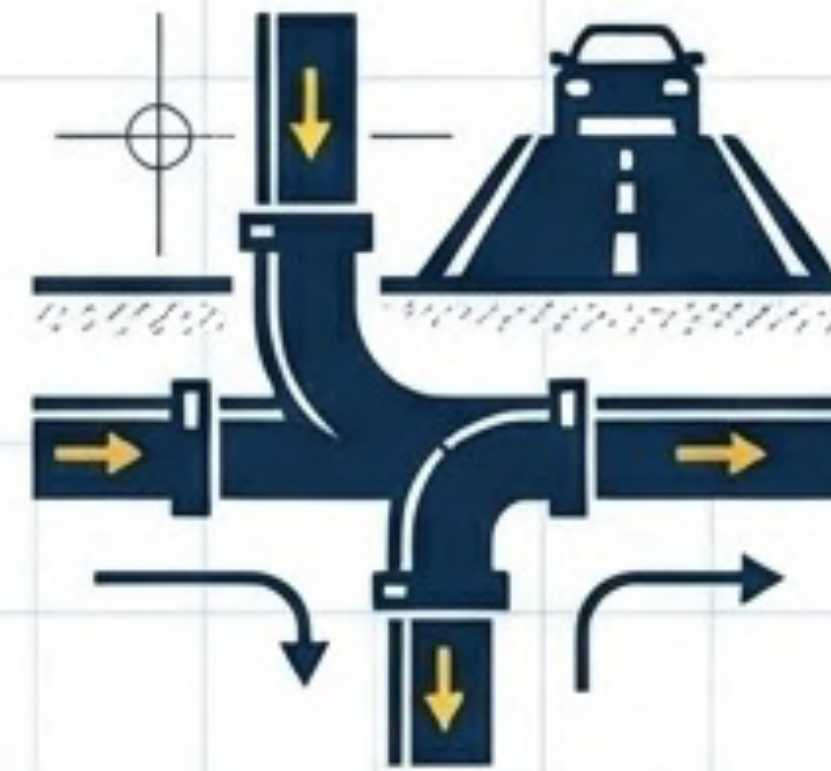
From agricultural foundations to next-generation energy grids, WHG has engineered every phase of Sabah's growth.

# The Complete Engineering Ecosystem



## Structural Engineering

Integrated building design for industrial, commercial, resort, and high-rise developments. From specialized foundation systems to structural economy.

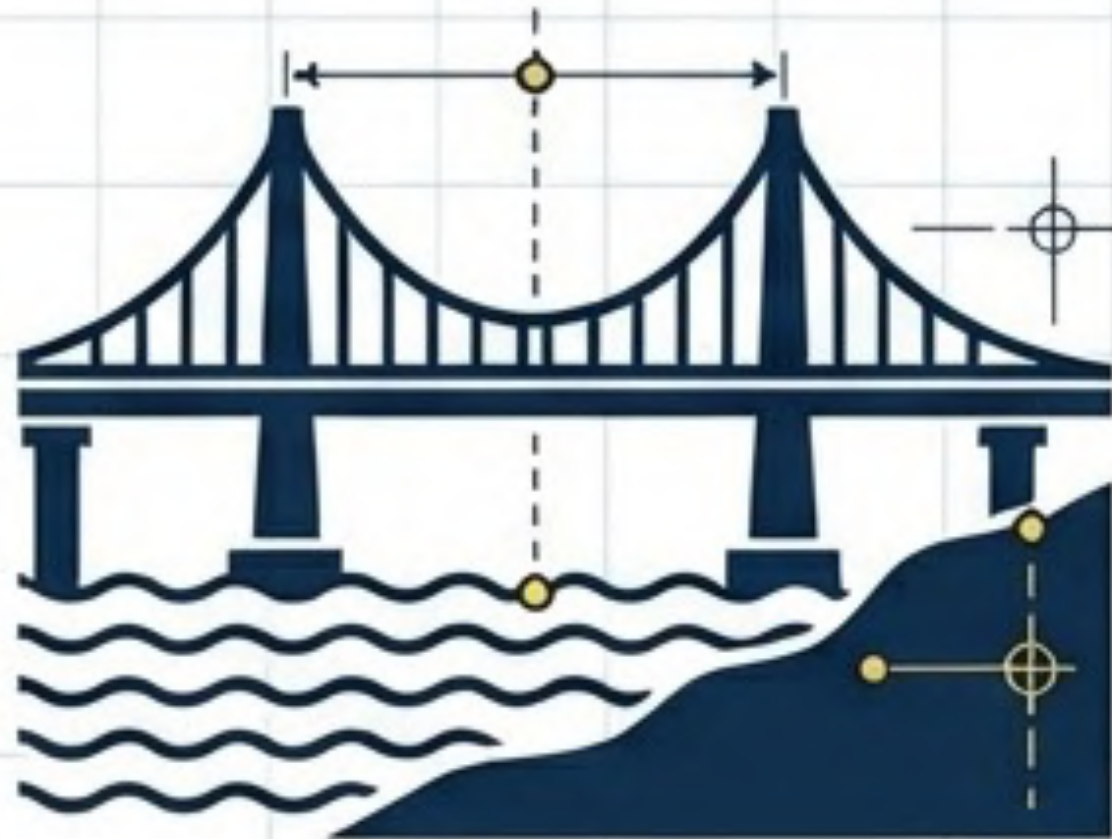


## Civil Works

Managing the essential arteries. Water supply networks, advanced sewerage schemes, drainage systems, and large-scale earthworks.

## Marine & Infrastructure

Bridging land and sea. Motorways, bridges, coastal reclamation, dredging, and marine jetties.



## Diagnostics & Project Management

End-to-end stewardship. Feasibility studies, environmental impact assessments (EIA), and forensic structural investigations.





# Structural Engineering Precision

Integrated design from low-rise housing to multi-million dollar commercial complexes.

## Commercial & High-Rise:

- Shopping centers, luxurious apartments, hotels, and multi-level car parks.

## Industrial & Aviation:

- Flatted factories, hangars, and specialized industrial facilities.

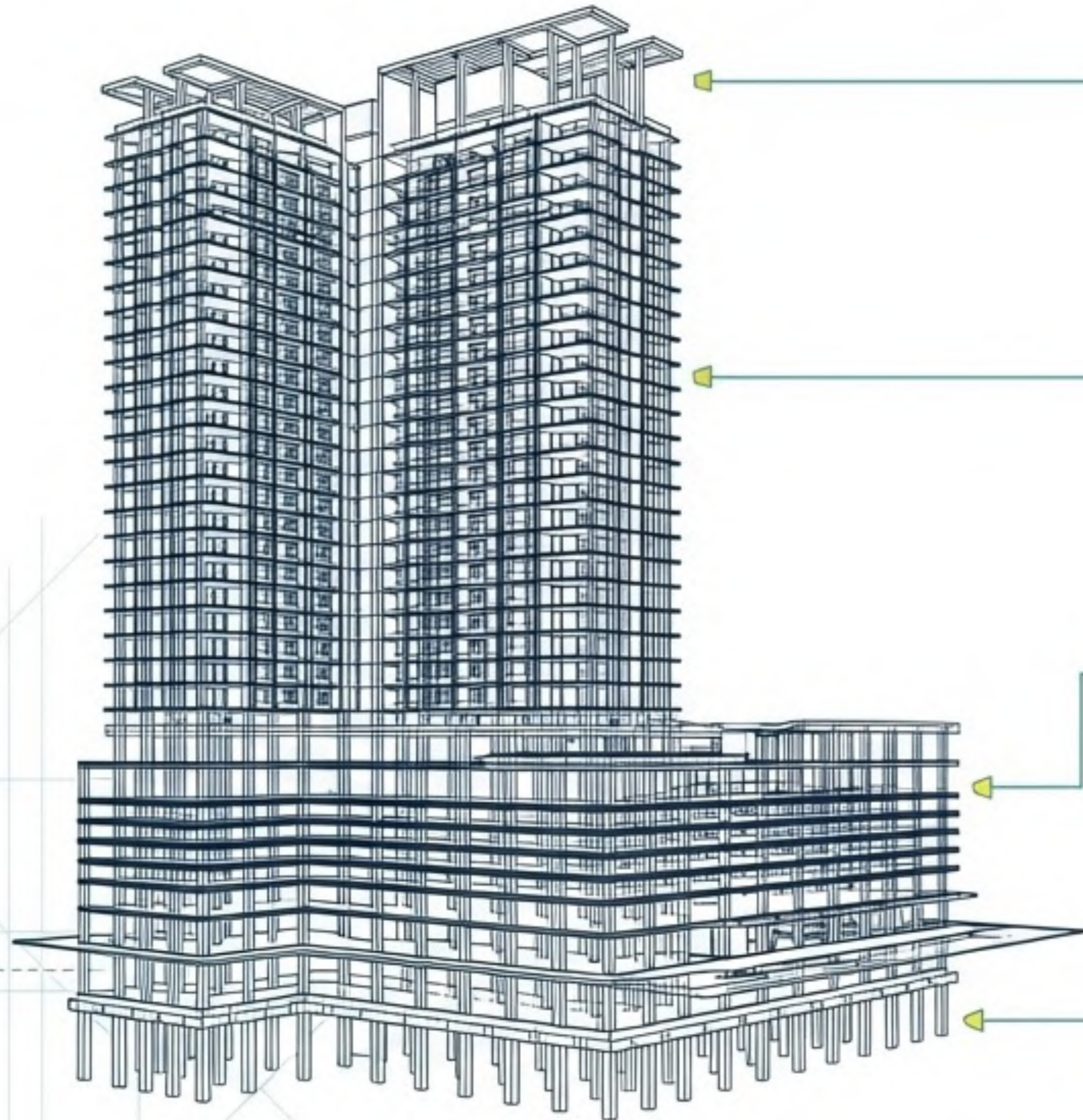
## Public & Institutional:

- Hospitals, museums, fire station headquarters, and exhibition halls.

## Specialized Systems:

- Deep evaluation of system buildings and long-span structural dynamics.

# Structural Mastery from Foundation to Skyline



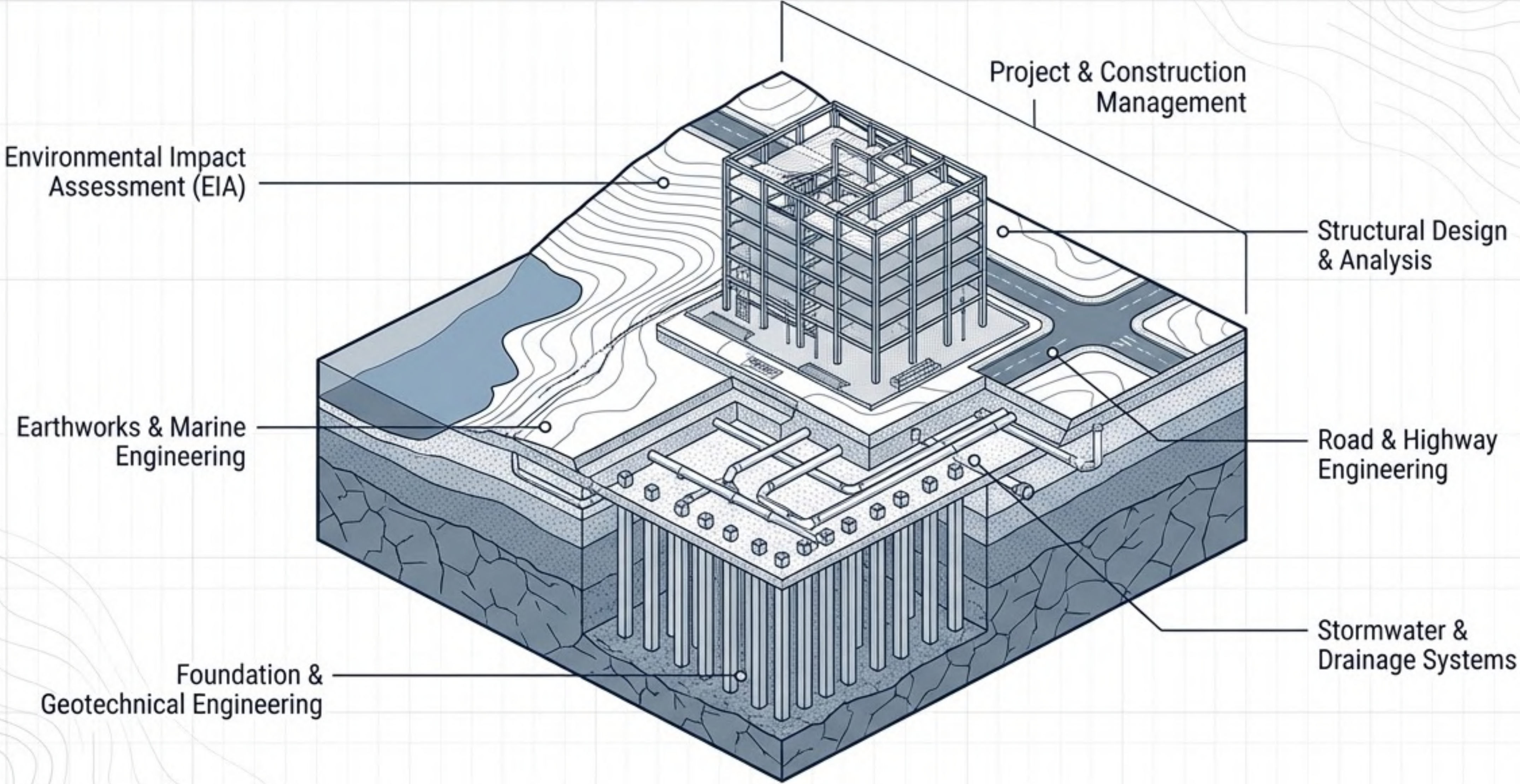
4 Custom Industrial & Hangar Spans  
Providing column-free internal layouts for factories and warehouses.

3 High-Rise Residential & Hotel Superstructures  
Wind-load, material economy, and structural integrity.

2 Expansive Commercial Spaces & Car Parks  
Engineering for load distribution and high-traffic utility.

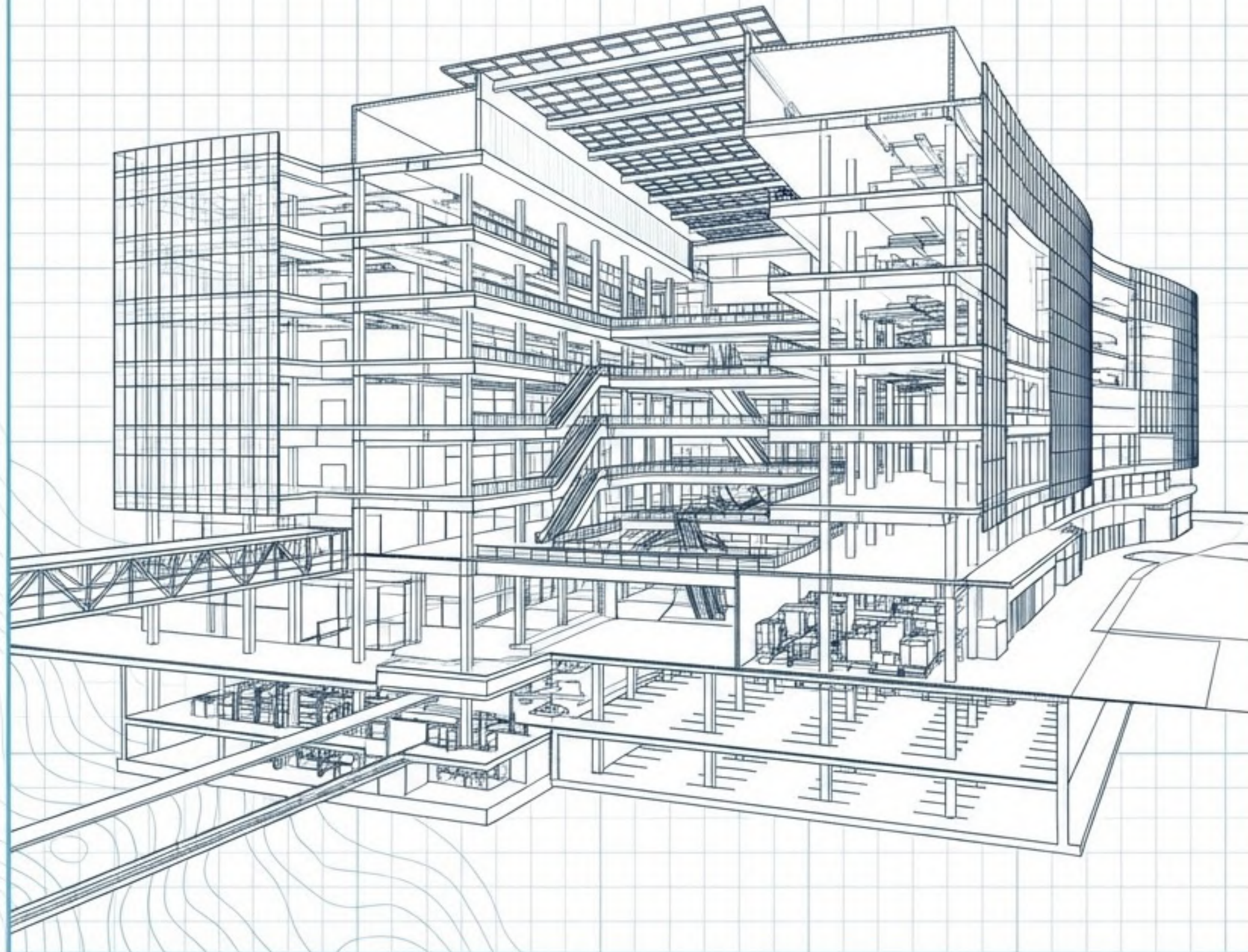
1 Deep Foundation Systems & Retaining Walls  
Ensuring stability in Sabah's unique geological conditions.

# End-to-End Engineering Ecosystem



Every project is approached with a focus on safety, efficiency, and long-term performance.

# Landmark Portfolio | Commercial & Retail.



## Suria Sabah Mall

Multi-phase structural engineering and foundation design for KK's premier retail destination.

---

## 1Borneo Hypermall

Large-scale structural analysis and project delivery for the region's largest integrated hypermall.

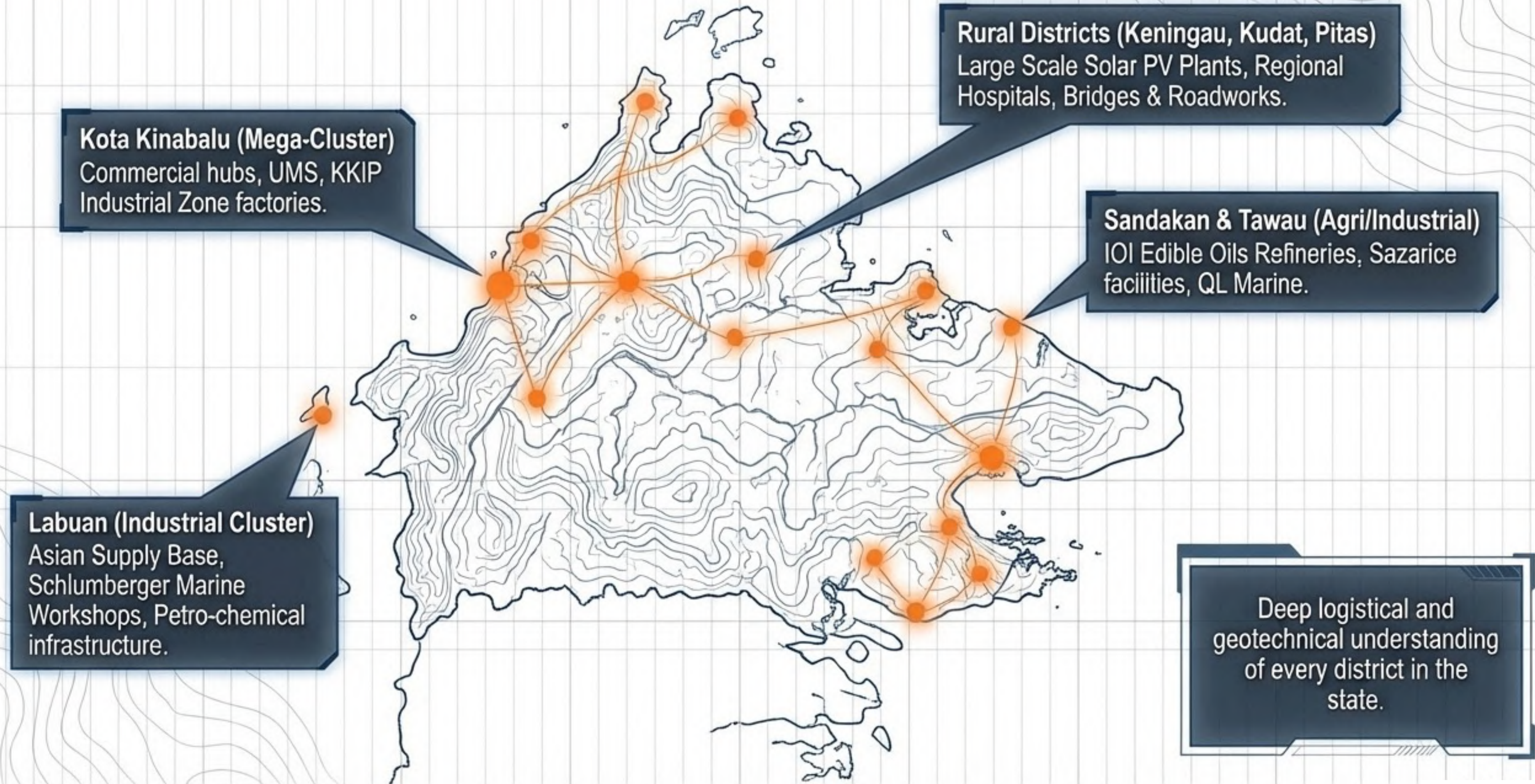
---

## Warisan Square Shopping Centre

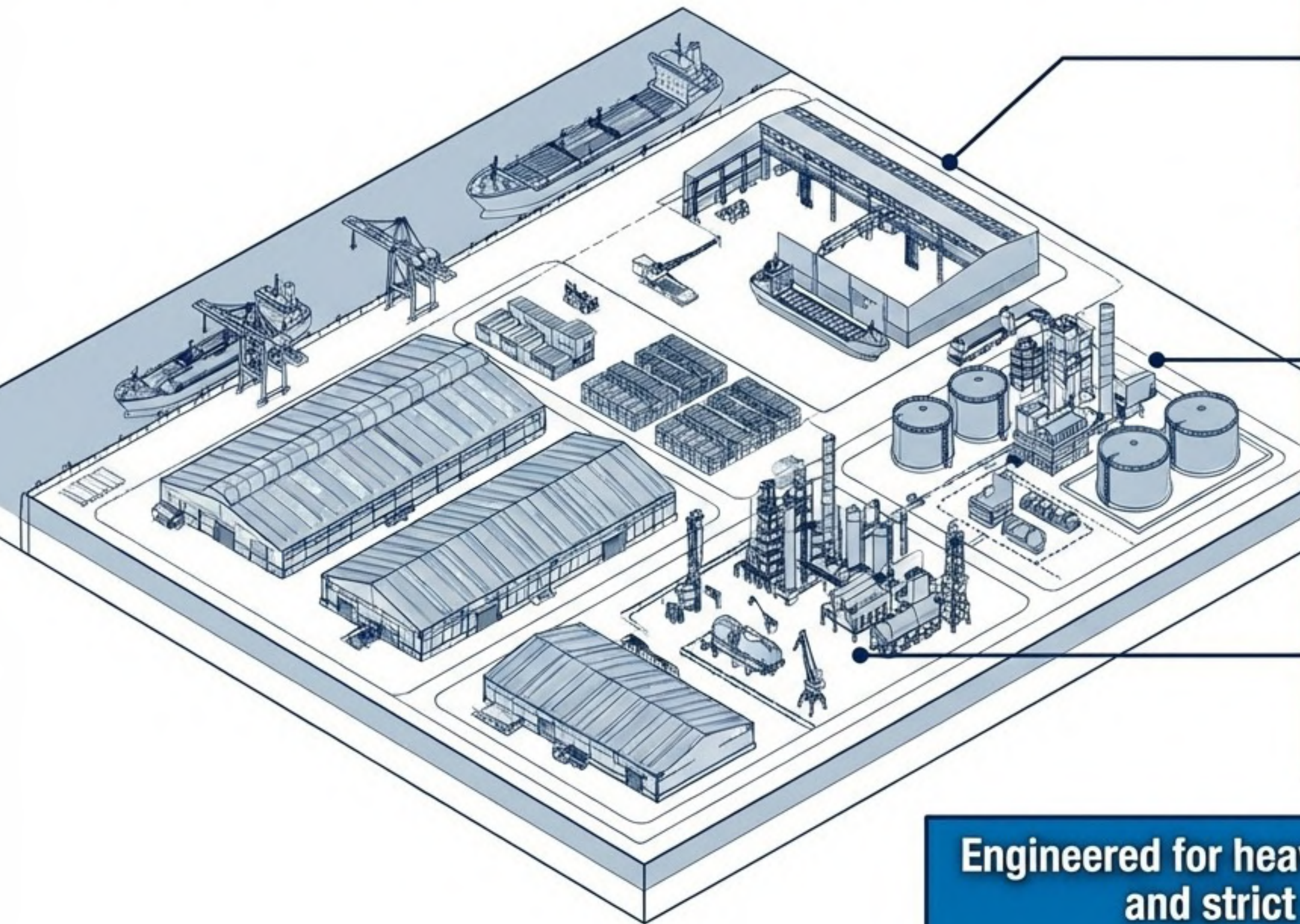
High-density urban commercial development.

**Consistent delivery across complex, high-traffic, large-scale commercial developments.**

# The Sabah Footprint: Statewide Execution.



# Landmark Portfolio | Industrial & Marine.



## Schlumberger Labuan Base

Complex structural design for heavy-duty marine workshops and offshore supply bases at Asian Supply Base (ASB).

## Sazarice Factory & QL Marine Products

Specialized structural engineering for heavy processing plants and cold-storage facilities.

## IOI Edible Oils & Palm Oil Mills

Sandakan refinery extensions, heavy equipment (boiler/crane) structural load analyses.

**Engineered for heavy loads, harsh marine environments, and strict industrial safety tolerances.**

# The WHG Execution Advantage

	The Fragmented Approach	The WHG Integrated Approach
Local Expertise	Generic terrain models.	<b>55 years</b> of precise data on Sabah's unique geotechnical and regulatory environment.
Execution Timeline	Delayed multi-vendor handoffs.	<b>Seamless, accelerated transition from EIA to construction management.</b>
Risk Mitigation	Unproven track record on mega-projects.	<b>Guaranteed reliability backed by 2,092 successfully completed projects.</b>
Scope	Single-discipline limits.	<b>Full-spectrum mastery: civil, structural, marine, and geotechnical.</b>

# Building the Future, Anchored in History

**Legacy**

**Capability**

**Portfolio**

**WHG's deep historical roots** in Sabah's challenging terrain directly power our ability to **execute the most advanced, modern projects with unmatched efficiency.**

We do not guess at the engineering constraints of this region; we **wrote the blueprint.** Every new development we engineer is backed by the data, discipline, and execution standards of over 2,000 preceding successes.

**Past Experience  
Guarantees Future  
Success**



# Partnering with the Engineers of Sabah's Future

## THE FOUNDATION

55+ Years of continuous operation.

Over 2,000 localized projects verifying our models.

## THE SCOPE

Complete integration of Civil, Structural, Marine, and Project Management disciplines under one roof.

## THE PROMISE

“Committed to excellence and professionalism.”

Practical engineering solutions grounded in real-world execution.

Start Your Project With Confidence.  
Contact our team for a comprehensive structural consultation.